



U.M.A UNITED
MANUFACTURERS
AUSTRALIA

ELECTRICAL PRODUCTS & SUPPLIES

At U.M.A., we take pride in providing a comprehensive selection of high-quality electrical products and supplies at competitive prices. Our offerings are designed to meet the needs of professional tradesmen across a wide range of industries.

As an Australian owned and operated business, we understand the importance of exceptional customer service and support. That's why we stand behind the quality of our products and are committed to ensuring our customers have access to the resources and assistance they need to succeed. Our team of experienced professionals are always available to answer your questions, provide guidance, and help you find the products that best meet your specific needs.

(02) 8107 5770

sales@UMaustralia.com.au



**CONDUITS /
CONNECTORS**



GLANDS



LUGS



TAPES



SITE PRODUCTS



HEATSHRINK

CONTENTS

1 CONDUITS

GALVANISED STEEL SCREWED CONDUIT	08
STAINLESS STEEL SCREWED CONDUIT	08
LOCFIT CONDUIT	08
LIQUID TIGHT CONDUIT	09
GALVANISED STEEL FLEXIBLE CONDUIT	10
PVC JACKETED STEEL FLEXIBLE CONDUIT	11
NON METALLIC LIQUID TIGHT CONDUIT	12
NYLON CONDUIT	13
CORRUGATED CONDUIT	14
SOLAR CORRUGATED CONDUIT	14
SOLAR RIGID CONDUIT	14
PVC GREY FLEXIBLE CONDUIT	15
HALOGEN FREE ABS CONDUIT	15
HALOGEN FREE LOW SMOKE	16
FLAME RETARDANT UV RESISTANT CONDUIT	

2 CONNECTORS, SADDLES & ACCESSORIES

GALVANISED STEEL, STAINLESS STEEL, PRESSLOCK & NON-THREAD CONNECTORS	20
LIQUID TIGHT CONNECTORS	24
NON METALLIC LIQUID TIGHT CONNECTORS	25
NYLON CONNECTORS	25
LSZH CONNECTORS	26
ABS CONNECTORS	28
NYLON & METAL LOCK NUTS	28
ZINC SADDLES	29
HOT DIPPED GAL SADDLES	29
316 GRADE STAINLESS STEEL SADDLES	29
SPRING/GIRDER CLIPS	29

3 CABLE TIES & GLANDS

NYLON CABLE TIES	32
100 PACK	32
1000 PACK	32
CABLE TIE GUN	32
316 GRADE STAINLESS STEEL CABLE TIES	33
FULLY COATED 316 GRADE STAINLESS STEEL CABLE TIES	33
LOW SMOKE HALOGEN FREE CABLE TIES	34
HOOK & LOOP ROLLS	34
PREMIUM HEAVY DUTY METAL	35
IP68 CABLE GLANDS	
EMC INSERTS	35
METAL IP68 CABLE GLANDS	35
BRASS GLANDS	36
TYPE A2 PVC COMPRESSION	36
TYPE CW STEEL WIRE ARMOUR	36
PREMIUM NYLON IP68 CABLE GLANDS	37

4 COPPER LUGS & CONNECTORS

COPPER CRIMP LUGS	40
CIRCUIT BREAKER NARROW PALM	42
CRIMP LUGS	
LONG PALM & LONG BARREL NO HOLE	42
COPPER CRIMP LUGS	
BI METAL CRIMP LUGS	43
COPPER LINKS	44
BRASS LINE TAPS	44
SCREW CONNECTORS	44

5 TAPES & PULL ROPES

UNDERGROUND WARNING TAPES	48
DETECTABLE UNDERGROUND WARNING TAPE	48
HARD UNDERGROUND CABLE COVER	49
TEMPORARY CONSTRUCTION TAPE	49
PULL LINE ROPE	49
TELSTRA ROPE	49

6 SITE PRODUCTS

CATENARY WIRE	52
THIMBLES	52
WIRE ROPE GRIPS	52
D SHACKLES	52
TURNBUCKLES	52
JACK CHAIN	53
EXTREME MAGNETS	53
EARTH RODS	53
EARTH CLAMPS	53
FISH ROD	53
ROOF & GUTTER SILICONE	54
CABLE LUBE	54
DEKTITES	54
NYLON & METAL LOCK NUTS	54
SADDLES	55
SPRING/GIRDER CLIPS	55

7 HEATSHRINK

THIN WALL TUBING LENGTHS	58
THIN WALL TUBING ROLLS	58
GLUE LINED THIN WALL TUBING	59
GLUE LINED MEDIUM WALL TUBING	59
GLUE LINED BREAK OUT BOOTS	60
GLUE LINED END CAPS	60

CONDUITS

1

GALVANISED STEEL SCREWED CONDUIT	08
STAINLESS STEEL SCREWED CONDUIT	08
LOCFIT CONDUIT	08
LIQUID TIGHT CONDUIT	09
GALVANISED STEEL FLEXIBLE CONDUIT	10
PVC JACKETED STEEL FLEXIBLE CONDUIT	11
NON METALLIC LIQUID TIGHT CONDUIT	12
NYLON CONDUIT	13
CORRUGATED CONDUIT	14
SOLAR CORRUGATED CONDUIT	14
SOLAR RIGID CONDUIT	14
PVC GREY FLEXIBLE CONDUIT	15
HALOGEN FREE ABS CONDUIT	15
HALOGEN FREE LOW SMOKE	16
FLAME RETARDANT UV RESISTANT CONDUIT	



GALVANISED STEEL SCREWED CONDUIT

Approvals

AS/NZS-2053-7-1995

U.M.A Galvanised Steel Screwed Conduit is AS/NZS Class 4 approved
Supplied with a coupling and a cap for easy installation and added protection

PART NUMBER	SIZE	TYPE	PACK QTY
UMHD204L	20.0mm x 4m	Galvanised Steel	10
UMHD254L	25.0mm x 4m	Galvanised Steel	6
UMHD324L	32.0mm x 4m	Galvanised Steel	5
UMHD404L	40.0mm x 4m	Galvanised Steel	3
UMHD504L	50.0mm x 4m	Galvanised Steel	2



STAINLESS STEEL SCREWED CONDUIT

U.M.A Stainless Steel Conduit is AS/NZS Class 4 approved
Manufactured from 316 Grade Stainless Steel
Supplied with a coupling and a cap for easy installation and added protection

PART NUMBER	SIZE	TYPE	PACK QTY
UMSS204L	20.0mm x 3m	Stainless Steel	10
UMSS254L	25.0mm x 3m	Stainless Steel	6
UMSS324L	32.0mm x 3m	Stainless Steel	5
UMSS404L	40.0mm x 3m	Stainless Steel	3
UMSS504L	50.0mm x 3m	Stainless Steel	2



LOCFIT CONDUIT

Made to Australian Standards AS/NZS 61386-21
4m length, 1.0mm wall thickness
Supplied with one coupling
Threadless 'Push On' conduit

PART NUMBER	SIZE	TYPE	PACK QTY
UMALF20	20.0mm x 4m	Galvanised Steel	10
UMALF25	25.0mm x 4m	Galvanised Steel	10
UMALF32	32.0mm x 4m	Galvanised Steel	5
UMALF40	40.0mm x 4m	Galvanised Steel	3
UMALF50	50.0mm x 4m	Galvanised Steel	3



LIQUID TIGHT CONDUIT

Approvals

IEC EN61368-1-22 RoHS

Galvanized steel, 16mm - 40mm Square Lock with Nylon Thread. 50mm - 63mm Interlock
Smooth wipe clean PVC jacketed

Liquid-tight IP66. Flame retardant/self-extinguishing

UV protection

Temperature range from -25°C to +105°C

Halogen Free Low Smoke insulation on request

PART NUMBER	NOMINAL SIZE ISO (MM)	NOMINAL SIZE US (MM)	I.D. (MM)	O.D. (MM)	MIN BEND RADIUS (MM)	LENGTH (M/COIL)
UMLT-16-10	16.0mm	3/8"	12.3mm	18.0mm	48.0mm	10m
UMLT-16-25	16.0mm	3/8"	12.3mm	18.0mm	48.0mm	25m
UMLT-20-10	20.0mm	1/2"	15.8mm	21.3mm	60.0mm	10m
UMLT-20-25	20.0mm	1/2"	15.8mm	21.3mm	60.0mm	25m
UMLT-25-10	25.0mm	3/4"	20.8mm	26.7mm	75.0mm	10m
UMLT-25-25	25.0mm	3/4"	20.8mm	26.7mm	75.0mm	25m
UMLT-32-10	32.0mm	1"	26.3mm	33.4mm	96.0mm	10m
UMLT-32-25	32.0mm	1"	26.3mm	33.4mm	96.0mm	25m
UMLT-40-10	40.0mm	1-1/4"	34.9mm	42.2mm	160.0mm	10m
UMLT-40-25	40.0mm	1-1/4"	34.9mm	42.2mm	160.0mm	25m
UMLT-50-10	50.0mm	1-1/2"	40.0mm	48.3mm	200.0mm	10m
UMLT-50-25	50.0mm	1-1/2"	40.0mm	48.3mm	200.0mm	25m
UMLT-63-10	63.0mm	2"	51.3mm	60.3mm	252.0mm	10m



GALVANISED STEEL FLEXIBLE CONDUIT

Approvals

IEC EN61368 RoHS

Flame retardant

High Mechanical Strength

IP40- 65 depending on termination No protection against moisture (Dry environments)

UV protection

Temperature range from -50°C to +300°C

PART NUMBER	NOMINAL SIZE ISO (MM)	I.D. (MM)	O.D. (MM)	MIN BEND RADIUS (MM)	LENGTH (M/COIL)
UMGSF-16-10	16.0mm	13.0mm	17.1mm	70.0mm	10m
UMGSF-16-25	16.0mm	13.0mm	17.1mm	70.0mm	25m
UMGSF-20-10	20.0mm	16.9mm	21.5mm	70.0mm	10m
UMGSF-20-25	20.0mm	16.9mm	21.5mm	70.0mm	25m
UMGSF-25-10	25.0mm	21.4mm	26.0mm	70.0mm	10m
UMGSF-25-25	25.0mm	21.4mm	26.0mm	70.0mm	25m
UMGSF-32-10	32.0mm	28.1mm	34.0mm	100.0mm	10m
UMGSF-32-25	32.0mm	28.1mm	34.0mm	100.0mm	25m
UMGSF-40-10	40.0mm	37.7mm	44.5mm	120.0mm	10m
UMGSF-40-25	40.0mm	37.7mm	44.5mm	120.0mm	25m
UMGSF-50-10	50.0mm	48.4mm	55.0mm	170.0mm	10m
UMGSF-50-25	50.0mm	48.4mm	55.0mm	170.0mm	25m
UMGSF-63-10	63.0mm	57.5mm	57.5mm	200.0mm	10m



PVC JACKETED STEEL FLEXIBLE CONDUIT

Approvals

IEC EN61368 RoHS

Helically wound flexible Steel Rand U304 Square lock with PVC Jacket
 IP40 - 65 depending on termination No protection against moisture (Dry environments)
 UV protection. Flame retardant. RoHS Compliant
 Temperature range from -20°C to +105°C
 Halogen Free Low Smoke insulation on request

PART NUMBER	NOMINAL SIZE ISO (MM)	NOMINAL SIZE US (MM)	I.D. (MM)	O.D. (MM)	MIN BEND RADIUS (MM)	LENGTH (M/COIL)
UMPGSF-16-10	16.0mm	12.0mm	10.3mm	14.0mm	60.0mm	10
UMPGSF-16-25	16.0mm	12.0mm	10.3mm	14.0mm	60.0mm	25
UMPGSF-20-10	20.0mm	16.0mm	13.0mm	17.1mm	70.0mm	10
UMPGSF-20-25	20.0mm	16.0mm	13.0mm	17.1mm	70.0mm	25
UMPGSF-25-10	25.0mm	20.0mm	16.9mm	21.5mm	70.0mm	10
UMPGSF-25-25	25.0mm	20.0mm	16.9mm	21.5mm	70.0mm	25
UMPGSF-32-10	32.0mm	25.0mm	21.4mm	26.0mm	70.0mm	10
UMPGSF-32-25	32.0mm	25.0mm	21.4mm	26.0mm	70.0mm	25
UMPGSF-40-10	40.0mm	32.0mm	28.1mm	34.0mm	100.0mm	10
UMPGSF-40-25	40.0mm	32.0mm	28.1mm	34.0mm	100.0mm	25
UMPGSF-50-10	50.0mm	40.0mm	37.7mm	44.5mm	120.0mm	10
UMPGSF-50-25	50.0mm	40.0mm	37.7mm	44.5mm	120.0mm	25
UMPGSF-63-10	63.0mm	50.0mm	48.4mm	55.0mm	170.0mm	10



NON METALLIC LIQUID TIGHT CONDUIT

SMOOTH EXTERIOR WALL

Approvals

cULus

Reinforced PVC. Standard Black
Smooth Interior. IP68
UV protection. Flame retardant
Temperature range from -20°C to +80°C

PART NUMBER	NOMINAL SIZE ISO (MM)	I.D. (MM)	O.D. (MM)	MIN BEND RADIUS (MM)	LENGTH (M/COIL)
UMSLT-16	16.0mm	12.3mm - 12.8mm	17.5mm - 18.0mm	72.5mm	30.5m
UMSLT-21	21.0mm	15.8mm - 16.3mm	20.8mm - 21.3mm	108.0mm	30.5m
UMSLT-27	27.0mm	20.8mm - 21.3mm	25.2mm - 26.7mm	165.0mm	30.5m
UMSLT-35	34.0mm	26.4mm - 27.08mm	32.8mm - 33.4mm	203.0mm	30.5m



CONVOLUTED EXTERIOR WALL

Approvals

cULus

Reinforced PVC. Standard Black
Smooth Interior. IP68
UV protection. Flame retardant
Temperature range from -20°C to +80°C

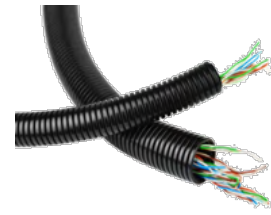
PART NUMBER	NOMINAL SIZE ISO (MM)	I.D. (MM)	O.D. (MM)	MIN BEND RADIUS (MM)	LENGTH (M/COIL)
UMCLT-21	21.0mm	15.8mm - 16.3mm	20.8mm - 21.3mm	76.0mm	30.5m
UMCLT-27	27.0mm	20.8mm - 21.3mm	25.2mm - 26.7mm	76.0mm	30.5m



NYLON CONDUIT

Low Smoke Halogen Free
 UV protection
 Flame retardant
 Temperature range from -40°C to +130°C. Short time +150°C

PART NUMBER	NOMINAL SIZE ISO (MM)	I.D. (MM)	O.D. (MM)	MIN BEND RADIUS (MM)	LENGTH (M/COIL)
UMNF10-25	10.0mm	7.5mm	10.0mm	10.0mm	25m
UMNF10-50	10.0mm	7.5mm	10.0mm	10.0mm	50m
UMNF13-25	13.0mm	10.0mm	13.0mm	20.0mm	25m
UMNF13-50	13.0mm	10.0mm	13.0mm	20.0mm	50m
UMNF16-25	16.0mm	12.0mm	15.8mm	30.0mm	25m
UMNF16-50	16.0mm	12.0mm	15.8mm	30.0mm	50m
UMNF18-25	18.0mm	14.6mm	18.5mm	40.0mm	25m
UMNF18-50	18.0mm	14.6mm	18.5mm	40.0mm	50m
UMNF21-25	21.0mm	17.0mm	21.2mm	45.0mm	25m
UMNF21-50	21.0mm	17.0mm	21.2mm	45.0mm	50m
UMNF25-25	25.0mm	21.2mm	25.0mm	50.0mm	25m
UMNF25-50	25.0mm	21.2mm	25.0mm	50.0mm	50m
UMNF28-25	28.0mm	23.0mm	28.5mm	55.0mm	25m
UMNF28-50	28.0mm	23.0mm	28.5mm	55.0mm	50m
UMNF34-25	34.0mm	29.0mm	34.5mm	60.0mm	25m
UMNF34-50	34.0mm	29.0mm	34.5mm	60.0mm	50m
UMNF42-25	42.5mm	36.0mm	42.5mm	70.0mm	25m
UMNF55-25	54.5mm	48.0mm	54.5mm	80.0mm	25m



CORRUGATED CONDUIT



Approvals

ASNZS2053:5:2001, ISO 9001:2015, ASNZS61368

U.M.A Corrugated HFT Conduit is flexible and can be used in both indoor and outdoor environments where wiring and cables are required to be protected and routed in more complex installations. Manufactured from unplasticized PVC to ensure resistance to impact, compression, weather, and chemicals.

PART NUMBER	SIZE	COLOUR	PACK QTY
UM1650MD	16.0mm x 50m	Grey	1
UM2050MD	20.0mm x 50m	Grey	1
UM2550MD	25.0mm x 50m	Grey	1
UM3225MD	32.0mm x 25m	Grey	1
UM4025MD	40.0mm x 25m	Grey	1
UM5025MD	50.0mm x 25m	Grey	1
UM2050HD	20.0mm x 50m	Orange	1
UM2550HD	25.0mm x 50m	Orange	1
UM3225HD	32.0mm x 25m	Orange	1
UM4025HD	40.0mm x 25m	Orange	1



SOLAR CORRUGATED CONDUIT



Approvals

ASNZS2053:5:2001, ISO 9001:2015

Specially designed for solar installations, our Solar Corrugated Conduit provides all the same applications and attributes as our Corrugated Conduit, with the added benefit of being able to withstand extreme UV exposure prevalent in Australian conditions. Strong resistance to the impact, weather, and chemical corrosion. Ideal cost-effective solution for protection of electrical cables in static PV solar systems. Suitable for residential or commercial solar PV (photovoltaic) installations. Cost-effective solution for protection of electrical cables in static PV solar systems.

PART NUMBER	SIZE	COLOUR	PACK QTY
UM2550HDS	25.0mm x 50m	Grey	1
UM3250HDS	32.0mm x 25m	Grey	1



SOLAR RIDGID CONDUIT [AS/NZS2053]

Suitable for residential or commercial solar PV (photovoltaic) installations. able to withstand extreme UV exposure

PART NUMBER	SIZE	TYPE	PACK QTY
Solar-25R	25.0mm x 4m	Solar Ridged	1
Solar-32R	32.0mm x 4m	Solar Ridged	1



PVC GREY FLEXIBLE CONDUIT

Approvals

AS/NZ 2053, ASTM D4329-05, ASTM D2616-12, ASTM E1225-98 D4329-05

PART NUMBER	SIZE	COLOUR	PACK QTY
UMF1615	16.0mm x 15m	Grey	1
UMF1630	16.0mm x 30m	Grey	1
UMF2015	20.0mm x 15m	Grey	1
UMF2030	20.0mm x 30m	Grey	1
UMF2515	25.0mm x 15m	Grey	1
UMF2530	25.0mm x 30m	Grey	1
UMF3210	32.0mm x 10m	Grey	1
UMF3230	32.0mm x 30m	Grey	1
UMF4010	40.0mm x 10m	Grey	1
UMF4030	40.0mm x 30m	Grey	1
UMF5010	50.0mm x 10m	Grey	1
UMF6310	63.0mm x 10m	Grey	1



HALOGEN FREE ABS CONDUIT

Approvals

AS/NZS 2053

UV Resistant

Temp range -40°C ~ +80°C

PART NUMBER	SIZE	COLOUR	PACK QTY
ABS-20	20.0mm x 4m	Black	1
ABS-25	25.0mm x 4m	Black	1
ABS-32	32.0mm x 4m	Black	1
ABS-40	40.0mm x 4m	Black	1
ABS-50	50.0mm x 4m	Black	1
ABS-63	63.0mm x 4m	Black	1
ABS-90	90.0mm x 4m	Black	1
ABS-114	114.0mm x 4m	Black	1



HALOGEN FREE LOW SMOKE FLAME RETARDANT UV RESISTANT CONDUIT

Approvals

AS/NZS 61386, IEC-61386-1, IEC-61386-21, IEC-60754-1, IEC-61034-2 UL-9486-1

Temp Range

Rigid: -20°C ~ +120°C

Corrugated: -25°C ~ +105°C

RIDGID

PART NUMBER	SIZE	COLOUR	PACK QTY
LSHF-20R	20.0mm x 4m	Black	1
LSHF-25R	25.0mm x 4m	Black	1
LSHF-32R	32.0mm x 4m	Black	1
LSHF-40R	40.0mm x 4m	Black	1
LSHF-50R	50.0mm x 4m	Black	1



CORRUGATED

PART NUMBER	SIZE	TYPE	PACK QTY
LSHF-20C	20mm x 50m	Black	1
LSHF-25C	25mm x 50m	Black	1
LSHF-32C	32mm x 25m	Black	1
LSHF-40C	40mm x 25m	Black	1
LSHF-50C	50mm x 25m	Black	1





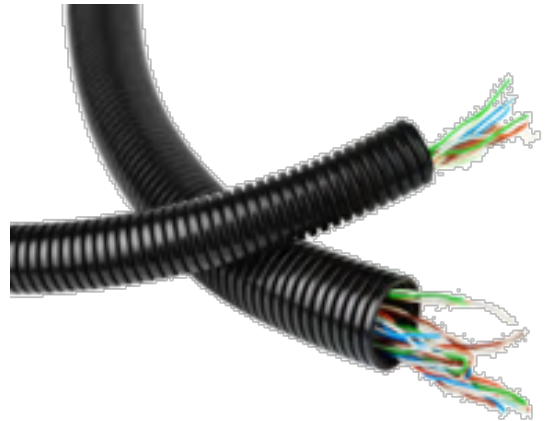
GALVANISED STEEL



LOCFIT



LIQUID TIGHT



NYLON



CORRUGATED



ABS

CONNECTORS, SADDLES & ACCESSORIES

2

GALVANISED STEEL, STAINLESS STEEL, PRESSLOCK & NON-THREAD CONNECTORS	20
LIQUID TIGHT CONNECTORS	24
NON LIQUID TIGHT CONNECTORS	25
NYLON CONNECTORS	25
LSZH CONNECTORS	26
ABS CONNECTORS	28
NYLON & METAL LOCK NUTS	28
SADDLES	29
SPRING/GIRDER CLIPS	29



CONDUIT ACCESSORIES

Gal Steel, 316 S/Steel, Push On Locfit & Non Threading

ELBOW

SIZE	STEEL GAL	316 S/STEEL	PUSH ON LOCFIT	NON THREAD LOCFIT
20.0mm	UME20	UMSSE20	UMAPL20E	UMNT20E
25.0mm	UME25	UMSSE25	UMAPL25E	UMNT25E
32.0mm	UME32	UMSSE32	N/A	N/A
40.0mm	UME40	UMSSE40	N/A	N/A
50.0mm	UME50	UMSSE50	N/A	N/A



INSPECTION ELBOW

SIZE	STEEL GAL	316 S/STEEL	PUSH ON LOCFIT	NON THREAD LOCFIT
20.0mm	UMIE20	UMSSIE20	UMAPL20IE	UMNTL20IE
25.0mm	UMIE25	UMSSIE25	UMAPL25IE	UMNTL25IE
32.0mm	UMIE32	UMSSIE32	N/A	N/A
40.0mm	UMIE40	UMSSIE40	N/A	N/A
50.0mm	UMIE50	UMSSIE50	N/A	N/A



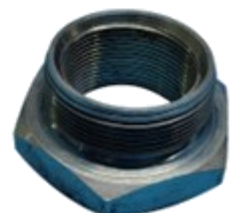
COUPLING

SIZE	STEEL GAL	316 S/STEEL	PUSH ON LOCFIT	NON THREAD LOCFIT
20.0mm	UMC20	UMSSC20	UMAPL20C	UMANT20C
25.0mm	UMC25	UMSSC25	UMAPL25C	UMANT25C
32.0mm	UMC32	UMSSC32	N/A	UMANT32C
40.0mm	UMC40	UMSSC40	N/A	UMANT40C
50.0mm	UMC50	UMSSC50	N/A	UMANT50C



REDUCER

SIZE	STEEL GAL	316 S/STEEL	PUSH ON LOCFIT	NON THREAD LOCFIT
20.0mm-16.0mm	UMSR2016	UMSSSR2016	N/A	N/A
25.0mm-20.0mm	UMSR2520	UMSSSR2520	UMA2520	N/A
32.0mm-25.0mm	UMSR3225	UMSSSR3225	N/A	N/A
40.0mm-32.0mm	UMSR4032	UMSSSR4032	N/A	N/A
50.0mm-40.0mm	UMSR5040	UMSSSR5040	N/A	N/A
63.0mm-50.0mm	UMSR6350	UMSSSR6350	N/A	N/A



CONDUIT ACCESSORIES

Gal Steel, 316 S/Steel, Push On Locfit & Non Threading

TEE

SIZE	STEEL GAL	316 S/STEEL	PUSH ON LOCFIT	NON THREAD LOCFIT
20.0mm	UMT20	UMSST20	N/A	N/A
25.0mm	UMT25	UMSST25	N/A	N/A
32.0mm	UMT32	UMSST32	N/A	N/A



INSPECTION TEE

SIZE	STEEL GAL	316 S/STEEL	PUSH ON LOCFIT	NON THREAD LOCFIT
20.0mm	UMIT20	UMSSIT20	UMAPL20IT	UMNTL20IT
25.0mm	UMIT25	UMSSIT25	UMAPL25IT	UMNTL25IT
32.0mm	UMIT32	UMSSIT32	N/A	N/A



1 WAY ROUND JUNCTION BOX

SIZE	STEEL GAL	316 S/STEEL	PUSH ON LOCFIT	NON THREAD LOCFIT
20.0mm	UMJB120	UMSSJB120	UMAPL20JB1	UMANT20JB1
25.0mm	UMJB125	UMSSJB125	UMAPL25JB1	UMANT25JB1
32.0mm	UMJB132	UMSSJB132	N/A	N/A
40.0mm	UMJB140	UMSSJB140	N/A	N/A
50.0mm	UMJB150	UMSSJB150	N/A	N/A



2 WAY ROUND JUNCTION BOX

SIZE	STEEL GAL	316 S/STEEL	PUSH ON LOCFIT	NON THREAD LOCFIT
20.0mm	UMJB220	UMSSJB220	UMAPL20JB2	UMANT20JB2
25.0mm	UMJB225	UMSSJB225	UMAPL25JB2	UMANT25JB2
32.0mm	UMJB232	UMSSJB232	N/A	N/A
40.0mm	UMJB240	UMSSJB240	N/A	N/A
50.0mm	UMJB250	UMSSJB250	N/A	N/A



CONDUIT ACCESSORIES

Gal Steel, 316 S/Steel, Push On Locfit & Non Threading

3 WAY ROUND JUNCTION BOX

SIZE	STEEL GAL	316 S/STEEL	PUSH ON LOCFIT	NON THREAD LOCFIT
20.0mm	UMJB320	UMSSJB320	UMAPL20JB3	UMANT20JB3
25.0mm	UMJB325	UMSSJB325	UMAPL25JB3	UMANT25JB3
32.0mm	UMJB332	UMSSJB332	N/A	N/A
40.0mm	UMJB340	UMSSJB340	N/A	N/A
50.0mm	UMJB350	UMSSJB350	N/A	N/A



4 WAY ROUND JUNCTION BOX

SIZE	STEEL GAL	316 S/STEEL	PUSH ON LOCFIT	NON THREAD LOCFIT
20.0mm	UMJB420	UMSSJB420	UMAPL20JB4	UMANT20JB4
25.0mm	UMJB425	UMSSJB425	UMAPL25JB4	UMANT25JB4
32.0mm	UMJB432	UMSSJB432	N/A	N/A
40.0mm	UMJB440	UMSSJB440	N/A	N/A
50.0mm	UMJB450	UMSSJB450	N/A	N/A



2 WAY ANGLED ROUND JUNCTION BOX

SIZE	STEEL GAL	316 S/STEEL	PUSH ON LOCFIT	NON THREAD LOCFIT
20.0mm	UMJBA220	UMSSJBA220	N/A	N/A
25.0mm	UMJBA225	UMSSJBA225	N/A	N/A
32.0mm	UMJBA232	UMSSJBA232	N/A	N/A
40.0mm	UMJBA240	UMSSJBA240	N/A	N/A
50.0mm	UMJBA250	UMSSJBA250	N/A	N/A



FLANGE DOME

SIZE	STEEL GAL	316 S/STEEL	PUSH ON LOCFIT	NON THREAD LOCFIT
20.0mm	UMFD20	UMSSFD20	UMPLFD20	N/A
25.0mm	UMFD25	UMSSFD25	UMPLFD25	N/A
32.0mm	UMFD32	UMSSFD32	N/A	N/A



CONDUIT ACCESSORIES

Gal Steel, 316 S/Steel, Push On Locfit & Non Threading

SWEEPING BEND

SIZE	STEEL GAL	316 S/STEEL	PUSH ON LOCFIT	NON THREAD LOCFIT
20.0mm	UMSB20	UMSSSB20	UMAPL20B	UMANT20B
25.0mm	UMSB25	UMSSSB25	UMAPL25B	UMANT25B
32.0mm	UMSB32	UMSSSB32	N/A	UMANT32B
40.0mm	UMSB40	UMSSSB40	N/A	UMANT40B
50.0mm	UMSB50	UMSSSB50	N/A	UMANT50B



MALE THREAD ADAPTER

SIZE	STEEL GAL	316 S/STEEL	PUSH ON LOCFIT	NON THREAD LOCFIT
20.0mm	N/A	N/A	UMAPL20MA	UMANT20MA
25.0mm	N/A	N/A	UMAPL25MA	UMANT25MA
32.0mm	N/A	N/A	N/A	UMANT32MA
40.0mm	N/A	N/A	N/A	UMANT40MA
50.0mm	N/A	N/A	N/A	UMANT50MA



FEMALE THREAD ADAPTER

SIZE	STEEL GAL	316 S/STEEL	PUSH ON LOCFIT	NON THREAD LOCFIT
20.0mm	N/A	N/A	UMAPL20FA	UMANT20FA
25.0mm	N/A	N/A	UMAPL25FA	UMANT25FA
32.0mm	N/A	N/A	N/A	UMANT32FA
40.0mm	N/A	N/A	N/A	UMANT40FA
50.0mm	N/A	N/A	N/A	UMANT50FA



HOSPITAL SADDLES

SIZE	STEEL GAL	316 S/STEEL	PUSH ON LOCFIT	NON THREAD LOCFIT
20.0mm	UMG20HS	UMSS20HS	N/A	N/A
25.0mm	UMG25HS	UMSS25HS	N/A	N/A
32.0mm	UMG32HS	UMSS32HS	N/A	N/A
40.0mm	UMG40HS	UMSS40HS	N/A	N/A
50.0mm	UMG50HS	UMSS50HS	N/A	N/A



CONDUIT ACCESSORIES

Gal Steel, 316 S/Steel, Push On Locfit & Non Threading

LOCK NUTS

SIZE	STEEL GAL	316 S/STEEL	PUSH ON LOCFIT	NON THREAD LOCFIT
20.0mm	UMG20LN	UMSS20LN	N/A	N/A
25.0mm	UMG25LN	UMSS25LN	N/A	N/A
32.0mm	UMG32LN	UMSS32LN	N/A	N/A
40.0mm	UMG40LN	UMSS40LN	N/A	N/A
50.0mm	UMG50LN	UMSS50LN	N/A	N/A



LIQUID TIGHT CONNECTORS

Nickle Plated Steel S27 and S24

Insert mater TPE/Rubber. Insert NBR

Low Smoke Halogen Free

Ferrule Galvanized Steel

Waterproof IP66

Temperature range from -40°C to +105°C

Resistant, dust proof, salt resistance, resistance to acid and alkali, alcohol, grease and common solvent



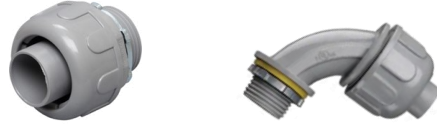
SIZE	STRAIGHT	45 DEGREE	90 DEGREE	FLEX GAL*	PACK QTY
16.0mm	LTC-16	LTC-16-45	LTC-16-90	FSC-16	1
20.0mm	LTC-20	LTC-20-45	LTC-20-90	FSC-20	1
25.0mm	LTC-25	LTC-25-45	LTC-25-90	FSC-25	1
32.0mm	LTC-32	LTC-32-45	LTC-32-90	FSC-32	1
40.0mm	LTC-40	LTC-40-45	LTC-40-90	FSC-40	1
50.0mm	LTC-50	LTC-50-45	LTC-50-90	FSC-50	1
63.0mm	LTC-63	LTC-63-45	LTC-63-90	FSC-63	1

NON LIQUID TIGHT CONNECTORS

Approvals
CE



Nylon 66
IP68 Rated based on installation
Low Smoke Halogen Free
UV Resistant
Flame retardant UL94-V2
Temperature range from -40°C to +120°C



SIZE	STRAIGHT	45 DEGREE	PACK QTY
M16 x 1.5mm	UMPVCLTC-16	UMPVCLTC-16-90	1
M20 x 1.5mm	UMPVCLTC-21	MUPVCLTC-21-90	1
M25 x 1.5mm	UMPVCLTC-27	UMPVCLTC-27-90	1
M32 x 1.5mm	UMPVCLTC-35	UMPVCLTC-35-90	1

NYLON CONNECTORS

Nylon 6, Rubber
Waterproof Push on IP65/68 Rated based on installation
Waterproof Premium on IP68
Low Smoke Halogen Free
UV protection. Flame retardant
Temperature range from -40°C to +100°C
Resistance to Alkali, inorganic salts, alcohol Lubricating oil



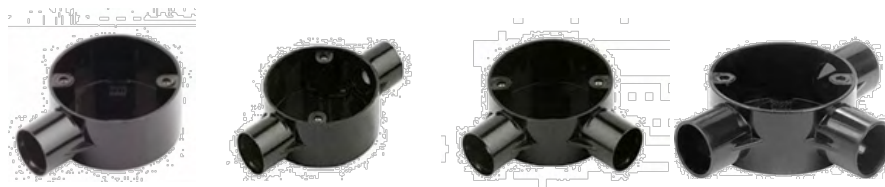
THREAD CABLE O.D.	PUSH ON STRAIGHT	PUSH ON 90 DEGREE	PREMIUM STRAIGHT	PREMIUM 90 DEGREE	PACK QTY
M10-10mm	UMNFM10-10	UMNFM10-10-90	UMRQF-M12-10	UMRQF-M12-10-90	1
M10-10mm	UMNFM12-13	UMNFM12-13-90	UMRQF-M16-13	UMRQF-M16-13-90	1
M12-13mm	UMNFM16-16	UMNFM16-16-90	UMRQF-M20-16	UMRQF-M20-16-90	1
M16-18.5mm	UMNFM20-18	UMNFM20-18-90	UMRQF-M20-18	UMRQF-M20-18-90	1
M20-21.2mm	UMNFM20-21	UMNFM20-21-90	UMRQF-M20-21	UMRQF-M20-21-90	1
M25-25mm	UMNFM25-25	UMNFM25-25-90	UMRQF-M25-25	UMRQF-M25-25-90	1
M25-25.8mm	UMNFM25-28	UMNFM25-28-90	UMRQF-M25-28	UMRQF-M25-28-90	1
M32-34.5mm	UMNFM32-34	UMNFM32-34-90	UMRQF-M32-34	UMRQF-M32-34-90	1
M40-42.5mm	UMNFM40-42	UMNFM40-42-90	UMRQF-M40-42	UMRQF-M40-42-90	1
M50-54.5mm	UMNFM50-55	UMNFM50-55-90	UMRQF-M50-55	UMRQF-M50-55-90	1

LSZH CONNECTORS

Approvals

AS/NZS 61386, IEC-61386-1, IEC-61386-21, IEC-60754-1, IEC-61034-2 UL-9486-1

ROUND JUNCTION BOXES



SIZE	1 WAY	2 WAY	2 WAY ANGLED	3 WAY	PACK QTY
20.0mm	HFT-SJB20-1	HFT-SJB20-2	HFT-SJB20-2A	HFT-SJB20-3	1
25.0mm	HFT-SJB25-1	HFT-SJB25-2	HFT-SJB25-2A	HFT-SJB25-3	1
32.0mm	HFT-SJB32-1	HFT-SJB32-2	HFT-SJB32-2A	HFT-SJB32-3	1



SIZE	4 WAY	PACK QTY
20.0mm	HFT-SJB20-4	1
25.0mm	HFT-SJB25-4	1
32.0mm	HFT-SJB32-4	1

ACCESSORIES



SIZE	LID	EXTENDER	SADDLE & BASE	CLIP	PACK QTY
20.0mm	HFT-SJBL20	HFT-SJBE20	HFT-20SB	HFT-20C	1
25.0mm	HFT-SJBL25	HFT-SJBE25	HFT-25SB	HFT-25C	1
32.0mm	HFT-SJBL32	N/A	HFT-32SB	HFT-32C	1
40.0mm	N/A	N/A	N/A	HFT-40C	1
50.0mm	N/A	N/A	N/A	HFT-50C	1



LSZH CONNECTORS

Approvals

AS/NZS 61386, IEC-61386-1, IEC-61386-21, IEC-60754-1, IEC-61034-2 UL-9486-1

BENDS, ELBOWS & TEES



SIZE	SWEEP BEND	SOLID ELBOW	INSPECTION ELBOW	ELBOW	PACK QTY
20.0mm	HFT-SB20	HFT-E20	HFT-IE20	HFT-IT20	1
25.0mm	HFT-SB25	HFT-E25	HFT-IE25	HFT-IT25	1
32.0mm	HFT-SB32	HFT-E32	HFT-IE32	HFT-IT32	1
40.0mm	HFT-SB40	N/A	N/A	N/A	1
50.0mm	HFT-SB50	N/A	N/A	N/A	1

CONDUIT ADAPTERS & COUPLINGS



SIZE	FEMALE ADAPTER	MALE ADAPTER	COUPLING	REDUCING COUPLING	PACK QTY
20.0mm	HFT-FA20	HFT-MA20	HFT-C20	N/A	1
25.0mm	HFT-FA25	HFT-MA25	HFT-C25	HFT-RC25-20	1
32.0mm	HFT-FA32	HFT-MA32	HFT-C32	HFT-RC32-25	1
40.0mm	HFT-FA40	HFT-MA40	HFT-C40	N/A	1
50.0mm	HFT-FA50	HFT-MA50	HFT-C50	N/A	1

ADAPTABLE BOXES



SIZE	BOXES	PACK QTY
75x75x50mm	HFT757550	1
100x100x75mm	HFT10010075	1
150x150x50mm	HFT15015050	1



ABS CONNECTORS

SIZE	COUPLING	BEND	PACK QTY
20.0mm	ABS-C20	N/A	1
25.0mm	ABS-C25	ABS-SB26	1
32.0mm	ABS-C32	N/A	1
40.0mm	ABS-C40	N/A	1
50.0mm	ABS-C50	N/A	1
63.0mm	ABS-C63	N/A	1
90.0mm	ABS-C90	N/A	1
114.0mm	ABS-C110	N/A	1



LOCK NUTS

SIZE	NYLON	METAL	PACK QTY
12.0mm	UMLN12N	UMLN12M	1
16.0mm	UMLN16N	UMLN16M	1
20.0mm	UMLN20N	UMLN20M	1
25.0mm	UMLN25N	UMLN25M	1
32.0mm	UMLN32N	UMLN32M	1
40.0mm	UMLN40N	UMLN40M	1
50.0mm	UMLN50N	UMLN50M	1
63.0mm	UMLN63N	UMLN63M	1
75.0mm	N/A	UMLN75M	1
90.0mm	N/A	UMLN90M	1
100.0mm	N/A	UMLN100M	1
115.0mm	N/A	UMLN115M	1
130.0mm	N/A	UMLN130M	1



SADDLES

U.M.A Saddles are made only from strong steel. Offering the perfect solution for all your cable and conduit management needs.

Offering 6.5mm fixing holes on each size for extra strength.

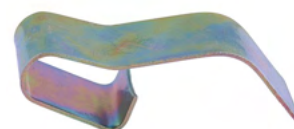


TYPE	SIZE	HALF	FULL	PACK QTY
ZINC SADDLES	12.0mm	UMHZ12	UMFZ12	100
	16.0mm	UMHZ16	UMFZ16	100
	20.0mm	UMHZ20	UMFZ20	100
	25.0mm	UMHZ25	UMFZ25	50
	32.0mm	UMHZ32	UMFZ32	50
	40.0mm	UMHZ40	UMFZ40	25
	50.0mm	UMHZ50	UMFZ50	20
HOT DIPPED GAL SADDLES	12.0mm	UMHHD12	UMFHD12	100
	16.0mm	UMHHD16	UMFHD16	100
	20.0mm	UMHHD20	UMFHD20	100
	25.0mm	UMHHD25	UMFHD25	50
	32.0mm	UMHHD32	UMFHD32	50
	40.0mm	UMHHD40	UMFHD40	25
	50.0mm	UMHHD50	UMFHD50	20
316 GRADE STAINLESS STEEL SADDLES	12.0mm	UMHSS12	UMFSS12	100
	16.0mm	UMHSS16	UMFSS16	100
	20.0mm	UMHSS20	UMFSS20	100
	25.0mm	UMHSS25	UMFSS25	50
	32.0mm	UMHSS32	UMFSS32	50
	40.0mm	UMHSS40	UMFSS40	25
	50.0mm	UMHSS50	UMFSS50	20

SPRING/GIRDER CLIPS

Girder clips are perfect for connecting cables, wires, and conduits to steel beams & profiles with no extra tooling required. Ideal when drilling is impossible or undesirable. Made from Spring Steel. High Impact resistant.

PART NUMBER	SIZE	PACK QTY
UMGC813	8.0mm - 13.0mm	100
UMGC1620	16.0mm - 20.0mm	100
UMGC2532	25.0mm - 32.0mm	100



3

CABLE TIES & GLANDS

NYLON CABLE TIES	32
100 PACK	32
1000 PACK	32
CABLE TIE GUN	32
316 GRADE STAINLESS STEEL CABLE TIES	33
FULLY COATED 316 GRADE STAINLESS STEEL CABLE TIES	33
LOW SMOKE HALOGEN FREE COATED CABLE TIES	34
HOOK & LOOP ROLLS	34
PREMIUM HEAVY DUTY METAL IP68 CABLE GLANDS	35
EMC INSERTS	35
METEL IP68 CABLE GLANDS	35
BRASS GLANDS	36
TYPE A2 PVC COMPRESSION	36
TYPE CW STEEL WIRE ARMOUR	36
PREMIUM NYLON IP68 CABLE GLANDS	37
PREMIUM MULTI HOLE SOLAR IP68 CABLE GLANDS	37



NYLON CABLE TIES

Approvals

UL (Underwriters Laboratories) 62275, EN62275:2019, CE, IEC62275, Reach, RoHS, TUV Approval: EN62275:2015, ISO9001:2015, ISO14001:2015

High quality, UV stabilised nylon cable ties suitable for outdoor use. Providing a versatile cable management solution for bundling cables or anchoring wires and cords. One piece self locking construction.

100 PACK

PART NUMBER	SIZE	COLOUR	PACK QTY
UMNT100B	100mm x 2.5mm	Black	100
UMNT150B	150mm x 3.6mm	Black	100
UMNT200B	200mm x 4.8mm	Black	100
UMNT280B	280mm x 4.8mm	Black	100
UMNT370B	370mm x 4.8mm	Black	100
UMNC370HB	370mm x 7.9mm	Black	100
UMNT550B	550mm x 8.0mm	Black	100
UMNC550HB	550mm x 12.7mm	Black	100
UMNT100N	100mm x 2.5mm	Natural	100
UMNT150N	150mm x 3.6mm	Natural	100
UMNT200N	200mm x 4.8mm	Natural	100
UMNT280N	280mm x 4.8mm	Natural	100
UMNT370N	370mm x 4.8mm	Natural	100
UMNC370HN	370mm x 7.9mm	Natural	100
UMNT550N	550mm x 8.0mm	Natural	100
UMNC550HN	550mm x 12.7mm	Natural	100



1000 PACK

PART NUMBER	SIZE	COLOUR	PACK QTY
UMNT100BX	100mm x 2.5mm	Black	1000
UMNT150BX	150mm x 3.6mm	Black	1000
UMNT200BX	200mm x 4.8mm	Black	1000
UMNT280BX	280mm x 4.8mm	Black	1000
UMNT100NX	100mm x 2.5mm	Natural	1000
UMNT150NX	150mm x 3.6mm	Natural	1000
UMNT200NX	200mm x 4.8mm	Natural	1000
UMNT280NX	280mm x 4.8mm	Natural	1000



CABLE TIE GUN

PART NUMBER	SIZE	PACK QTY
SSGUN	7.9mm	1



316 GRADE STAINLESS STEEL CABLE TIES

Approvals

UL (Underwriters Laboratories) 62275

Self-locking head design speeds installation and locks into place at any length along Cable tie body. Anti slip Roller Ball Head for ease of use. Provides a strong, durable method of cable bundling. Can be used in a wide range of indoor, outdoor, and underground locations (including direct burial). Smooth surfaces and rounded edges assures cable protection and worker safety. Provides the ultimate support for network cables. Perfect for environmentally harsh conditions. Excellent for Solar, Mining and all Industrial applications. Non magnetic.

PART NUMBER	SIZE	TYPE	PACK QTY
UMSST100	100mm x 4.6mm	316 Grade S/S	100
UMSST125	125mm x 4.6mm	316 Grade S/S	100
UMSST150	150mm x 4.6mm	316 Grade S/S	100
UMSST200	200mm x 4.6mm	316 Grade S/S	100
UMSST250	250mm x 4.6mm	316 Grade S/S	100
UMSST300	300mm x 4.6mm	316 Grade S/S	100
UMSST360	360mm x 4.6mm	316 Grade S/S	100
UMSST520	520mm x 4.6mm	316 Grade S/S	100
UMSST200H	200mm x 7.9mm	316 Grade S/S	50
UMSST300H	300mm x 7.9mm	316 Grade S/S	50
UMSST360H	360mm x 7.9mm	316 Grade S/S	50
UMSST520H	520mm x 7.9mm	316 Grade S/S	50



FULLY COATED 316 GRADE STAINLESS STEEL CABLE TIES

Low smoke & halogen free epoxy resin coating. Durable, long lasting for use in highly corrosive environments .

PART NUMBER	SIZE	TYPE	PACK QTY
UMSST150C	150mm x 4.6mm	S/S	100
UMSST200C	200mm x 4.6mm	S/S	100
UMSST300C	300mm x 4.6mm	S/S	100
UMSST360C	360mm x 4.6mm	S/S	100
UMSST520C	520mm x 4.6mm	S/S	100
UMSST200HC	200mm x 7.9mm	S/S	50
UMSST300HC	300mm x 7.9mm	S/S	50
UMSST360HC	360mm x 7.9mm	S/S	50
UMSST520HC	520mm x 7.9mm	S/S	50



LOW SMOKE HALOGEN FREE COATED CABLE TIES

Approvals

ABS, DVN, UL & CE, EN 14582 & ASTM D2842

FULLY COATED low smoke & halogen free epoxy resin coating.

- 304 Grade Stainless Steel
- Selectively treated coated polyester
- Non-toxic, low smoke halogen free coating
- Temperature range: -60°C to +165°C
- Anti vibration
- ^++++ LOW SMOKE TEST



PART NUMBER	SIZE	TYPE	PACK QTY
LSHFSSC200	200mm x 4.6mm	Low Smoke, halogen free	100
LSHFSSC360	360mm x 4.6mm	Low Smoke, halogen free	100
LSHFSSC520	520mm x 4.6mm	Low Smoke, halogen free	100
LSHFSSC200H	200mm x 7.9mm	Low Smoke, halogen free	50
LSHFSSC360H	360mm x 7.9mm	Low Smoke, halogen free	50
LSHFSSC520H	520mm x 7.9mm	Low Smoke, halogen free	50



HOOK & LOOP ROLLS

Soft and flexible for total protection of all cables and patch cords. Additional sizes and colours on request.

PART NUMBER	SIZE	PACK QTY
UMHLR12	12.0mm	25m
UMHLR16	16.0mm	25m
UMHLR25	25.0mm	25m



PREMIUM HEAVY DUTY METAL IP68 CABLE GLANDS

Approvals

AS1939

Superior strain relief offered with nickel plated brass for corrosion protection. Incorporates a unique camera shutter principle which protects the cable. Fully insulated by plastic and neoprene seal for fluid tightness.

PART NUMBER	THREAD SIZE	MIN SIZE MAX SIZE	PACK QTY
UMG12M	12.0mm	4.5mm - 8.0mm	1
UMG16M	16.0mm	6.0mm - 10.0mm	1
UMG20M	20.0mm	9.0mm - 14.0mm	1
UMG25M	25.0mm	14.0mm - 18.0mm	1
UMG32M	32.0mm	18.0mm - 25.0mm	1
UMG40M	40.0mm	24.0mm - 30.0mm	1
UMG50M	50.0mm	31.0mm - 41.0mm	1
UMG63M	63.0mm	35.0mm - 45.0mm	1



EMC INSERTS

EMC Insert provides a seal on cable sheath and contact between screen to earth (body).

PART NUMBER	SIZE	PACK QTY
UMEMC12	12.0mm	1
UMEMC16	16.0mm	1
UMEMC20	20.0mm	1
UMEMC25	25.0mm	1
UMEMC32	32.0mm	1
UMEMC40	40.0mm	1
UMEMC50	50.0mm	1
UMEMC63	63.0mm	1



METAL IP68 CABLE GLANDS

Price fitting range

PART NUMBER	THREAD SIZE	MIN SIZE MAX SIZE	PACK QTY
MG12	12.0mm	3.0mm - 6.0mm	1
MG16	16.0mm	5.0mm - 10.0mm	1
MG20	20.0mm	8.0mm - 13.0mm	1
MG25	25.0mm	11.0mm - 17.0mm	1
MG32	32.0mm	15.0mm - 21.0mm	1
MG40	40.0mm	19.0mm - 28.0mm	1
MG50	50.0mm	26.0mm - 35.0mm	1
MG63	63.0mm	32.0mm - 65.0mm	1



IP68 BRASS GLANDS (TYPE A2 PVC COMPRESSION)

PART NUMBER	THREAD SIZE	MIN SIZE MAX SIZE	PACK QTY
UMA220SS	20.0mm	3.2mm - 8.7mm	1
UMA220S	20.0mm	6.1mm - 11.7mm	1
UMA220L	20.0mm	6.5mm - 14.0mm	1
UMA225L	25.0mm	11.1mm - 20.0mm	1
UMA232L	32.0mm	17.0mm - 26.3mm	1
UMA240L	40.0mm	25.5mm - 32.2mm	1
UMA240S	50.0mm	31.0mm - 38.2mm	1
UMA250L	50.0mm	35.6mm - 44.0mm	1
UMA263S	63.0mm	41.5mm - 49.9mm	1
UMA263L	63.0mm	47.2mm - 55.9mm	1
UMA275L	75.0mm	54.0mm - 61.9mm	1
UMA275S	75.0mm	61.1mm - 67.9mm	1
UMA290L	90.0mm	66.6mm - 79.9mm	1
UMA2100L	100.0mm	76.0mm - 91.0mm	1
UMA2115L	115.0mm	86.0mm - 97.9mm	1
UMA2130L	130.0mm	97.0mm - 114.9mm	1



IP68 BRASS GLANDS (TYPE CW STEEL WIRE ARMOUR)

PART NUMBER	THREAD SIZE	MIN SIZE MAX SIZE	PACK QTY
UMCW16SS	16.0mm	6.1mm - 11.8mm	1
UMCW20SS	20.0mm	6.1mm - 11.8mm	1
UMCW20S	20.0mm	9.5mm - 15.9mm	1
UMCW20L	20.0mm	12.5mm - 20.9mm	1
UMCW25S	25.0mm	14.0mm - 22.0mm	1
UMCW25L	25.0mm	18.2mm - 26.2mm	1
UMCW32L	32.0mm	23.7mm - 33.9mm	1
UMCW40L	40.0mm	27.9mm - 40.4mm	1
UMCW50S	50.0mm	35.2mm - 46.7mm	1
UMCW50L	50.0mm	40.4mm - 53.0mm	1
UMCW63S	63.0mm	45.6mm - 59.4mm	1
UMCW63L	63.0mm	54.6mm - 65.8mm	1
UMCW75S	75.0mm	59.0mm - 72.0mm	1
UMCW75L	75.0mm	66.7mm - 78.4mm	1
UMCW90L	90.0mm	76.2mm - 90.3mm	1
UMCW100L	100.0mm	86.1mm - 101.4mm	1
UMCW115L	115.0mm	101.5mm - 110.2mm	1
UMCW130L	130.0mm	110.2mm - 123.2mm	1



PREMIUM NYLON IP68 CABLE GLANDS

Approvals

ASNZS AS1939, EN 60998-1:2004, EN 60998-2:2004, EN 62444:2013, IEC 62321, AMD1, ISO9001, GTS, GB/T 8323.2:2008, GB/T 16422.3:2014, IP69K GB/T , 30038-2013, IEC62321-5:2013, IEC62321-4:2013+AMD1:2017, IEC62321-7-2:2013, IEC62321-6:2015, IEC62321-8:2017, EN62444:2013, EN60998-1:2004, EN60998-2:2005, CE, RoHS (EU) 2015/863, SGS, CMA, ilac, CNAS, SVCH, REACH, (EC) 1907/2006, ISO

Nylon Cable Glands offering excellent strain relief and cable protection. Our cable glands allow you to mount and secure cable in a pre-drilled hole. Resilient while outdoors or in other harsh environments.

PART NUMBER	THREAD SIZE	MIN SIZE MAX SIZE	PACK QTY
UMG12N	12.0mm	3.0mm - 6.5mm	1
UMG16N	16.0mm	6.0mm - 10.0mm	1
UMG20N	20.0mm	8.5mm - 14.0mm	1
UMG25N	25.0mm	13.0mm - 18.0mm	1
UMG32N	32.0mm	18.0mm - 25.0mm	1
UMG40N	40.0mm	24.0mm - 32.0mm	1
UMG50N	50.0mm	31.0mm - 41.0mm	1
UMG63N	63.0mm	35.0mm - 45.0mm	1
UMG63LN	63.0mm	44.0mm - 51.0mm	1



PREMIUM MULTI HOLE SOLAR IP68 CABLE GLANDS

PART NUMBER	TYPE	THREAD SIZE	MIN SIZE MAX SIZE	PACK QTY
UMSG25-2S	2 way	25.0mm	3.0mm - 5.5mm	1
UMSG25-2L	2 way	25.0mm	4.0mm - 6.5mm	1
UMSG25-3S	3 way	25.0mm	2.0mm - 5.0mm	1
UMSG25-3L	3 way	25.0mm	5.0mm - 8.0mm	1
UMSG25-4S	4 way	25.0mm	3.0mm - 5.5mm	1
UMSG25-4L	4 way	25.0mm	5.0mm - 7.0mm	1
UMSG25-5L	5 way	25.0mm	4.0mm - 6.0mm	1



COPPER LUGS & CONNECTORS

4

COPPER CRIMP LUGS	40
CIRCUIT BREAKER NARROW	42
PALM CRIMP LUGS	
LONG PALM & LONG BARREL NO HOLE	42
COPPER CRIMP LUGS	
BI METAL CRIMP LUGS	43
COPPER LINKS	44
BRASS LINE TAPS	44
SCREW CONNECTORS	44



COPPER CRIMP LUGS

Approvals

IEC 61238-1-2003 & ASNZ 4325-1-1995)

U.M.A Copper Lugs are fully annealed, made from 99% oxygen free copper Electro Tinned. Operating Temp: -55°C to +155°C

PART NUMBER	TYPE	SIZE	PACK QTY
UMSL1.5-4	Straight Lug	1.5mm sq - 4.0mm stud	100
UMSL1.5-5	Straight Lug	1.5mm sq - 5.0mm stud	100
UMSL1.5-6	Straight Lug	1.5mm sq - 6.0mm stud	100
UMSL1.5-8	Straight Lug	1.5mm sq - 8.0mm stud	100
UMSL2.5-4	Straight Lug	2.5mm sq - 4.0mm stud	100
UMSL2.5-5	Straight Lug	2.5mm sq - 5.0mm stud	100
UMSL2.5-6	Straight Lug	2.5mm sq - 6.0mm stud	100
UMSL2.5-8	Straight Lug	2.5mm sq - 8.0mm stud	100
UMSL4-4	Straight Lug	4.0mm sq - 4.0mm stud	100
UMSL4-5	Straight Lug	4.0mm sq - 5.0mm stud	100
UMSL4-6	Straight Lug	4.0mm sq - 6.0mm stud	100
UMSL4-8	Straight Lug	4.0mm sq - 8.0mm stud	100
UMSL4-10	Straight Lug	4.0mm sq - 10.0mm stud	100
UMSL6-4	Straight Lug	6.0mm sq - 4.0mm stud	100
UMSL6-5	Straight Lug	6.0mm sq - 5.0mm stud	100
UMSL6-6	Straight Lug	6.0mm sq - 6.0mm stud	100
UMSL6-8	Straight Lug	6.0mm sq - 8.0mm stud	100
UMSL6-10	Straight Lug	6.0mm sq - 10.0mm stud	100
UMSL10-5	Straight Lug	10.0mm sq - 5.0mm stud	100
UMSL10-6	Straight Lug	10.0mm sq - 6.0mm stud	100
UMSL10-8	Straight Lug	10.0mm sq - 8.0mm stud	100
UMSL10-10	Straight Lug	10.0mm sq - 10.0mm stud	100
UMSL10-12	Straight Lug	10.0mm sq - 12.0mm stud	100
UMBML16-5	Flared Entry	16.0mm sq - 5.0mm stud	50
UMBML16-6	Flared Entry	16.0mm sq - 6.0mm stud	50
UMBML16-8	Flared Entry	16.0mm sq - 8.0mm stud	50
UMBML16-10	Flared Entry	16.0mm sq - 10.0mm stud	50
UMBML16-12	Flared Entry	16.0mm sq - 12.0mm stud	50
UMBML25-6	Flared Entry	25.0mm sq - 6.0mm stud	50
UMBML25-8	Flared Entry	25.0mm sq - 8.0mm stud	50
UMBML25-10	Flared Entry	25.0mm sq - 10.0mm stud	50
UMBML25-12	Flared Entry	25.0mm sq - 12.0mm stud	50
UMBML35-6	Flared Entry	35.0mm sq - 6.0mm stud	50
UMBML35-8	Flared Entry	35.0mm sq - 8.0mm stud	50
UMBML35-10	Flared Entry	35.0mm sq - 10.0mm stud	50
UMBML35-12	Flared Entry	35.0mm sq - 12.0mm stud	50
UMBML50-6	Flared Entry	50.0mm sq - 6.0mm stud	50
UMBML50-8	Flared Entry	50.0mm sq - 8.0mm stud	50
UMBML50-10	Flared Entry	50.0mm sq - 10.0mm stud	50
UMBML25-12	Flared Entry	25.0mm sq - 12.0mm stud	50
UMBML35-6	Flared Entry	35.0mm sq - 6.0mm stud	50
UMBML35-8	Flared Entry	35.0mm sq - 8.0mm stud	50
UMBML35-10	Flared Entry	35.0mm sq - 10.0mm stud	50
UMBML35-12	Flared Entry	35.0mm sq - 12.0mm stud	50



PART NUMBER	TYPE	SIZE	PACK QTY
UMBML50-6	Flared Entry	50.0mm sq - 6.0mm stud	50
UMBML50-8	Flared Entry	50.0mm sq - 8.0mm stud	50
UMBML50-10	Flared Entry	50.0mm sq - 10.0mm stud	50
UMBML50-12	Flared Entry	50.0mm sq - 12.0mm stud	50
UMBML70-6	Flared Entry	70.0mm sq - 6.0mm stud	25
UMBML70-8	Flared Entry	70.0mm sq - 8.0mm stud	25
UMBML70-10	Flared Entry	70.0mm sq - 10.0mm stud	25
UMBML70-12	Flared Entry	70.0mm sq - 12.0mm stud	25
UMBML70-16	Flared Entry	70.0mm sq - 16.0mm stud	25
UMBML95-6	Flared Entry	95.0mm sq - 6.0mm stud	25
UMBML95-8	Flared Entry	95.0mm sq - 8.0mm stud	25
UMBML95-10	Flared Entry	95.0mm sq - 10.0mm stud	25
UMBML95-12	Flared Entry	95.0mm sq - 12.0mm stud	25
UMBML95-16	Flared Entry	95.0mm sq - 16.0mm stud	25
UMBML120-8	Flared Entry	120.0mm sq - 8.0mm stud	1
UMBML120-10	Flared Entry	120.0mm sq - 10.0mm stud	1
UMBML120-12	Flared Entry	120.0mm sq - 12.0mm stud	1
UMBML120-16	Flared Entry	120.0mm sq - 16.0mm stud	1
UMBML120-20	Flared Entry	120.0mm sq - 20.0mm stud	1
UMBML150-8	Flared Entry	150.0mm sq - 8.0mm stud	1
UMBML150-10	Flared Entry	150.0mm sq - 10.0mm stud	1
UMBML150-12	Flared Entry	150.0mm sq - 12.0mm stud	1
UMBML150-16	Flared Entry	150.0mm sq - 16.0mm stud	1
UMBML150-20	Flared Entry	150.0mm sq - 20.0mm stud	1
UMBML185-10	Flared Entry	185.0mm sq - 10.0mm stud	1
UMBML185-12	Flared Entry	185.0mm sq - 12.0mm stud	1
UMBML185-16	Flared Entry	185.0mm sq - 16.0mm stud	1
UMBML185-20	Flared Entry	185.0mm sq - 20.0mm stud	1
UMBML240-10	Flared Entry	240.0mm sq - 10.0mm stud	1
UMBML240-12	Flared Entry	240.0mm sq - 12.0mm stud	1
UMBML240-16	Flared Entry	240.0mm sq - 16.0mm stud	1
UMBML240-BL	Flared Entry	240.0mm sq blank	1
UMBML300-10	Flared Entry	300.0mm sq - 10.0mm stud	1
UMBML300-12	Flared Entry	300.0mm sq - 12.0mm stud	1
UMBML300-16	Flared Entry	300.0mm sq - 16.0mm stud	1
UMBML300-BL	Flared Entry	300.0mm sq blank	1
UMBML400-12	Flared Entry	400.0mm sq - 12.0mm stud	1
UMBML400-16	Flared Entry	400.0mm sq - 16.0mm stud	1
UMBML400-20	Flared Entry	400.0mm sq - 20.0mm stud	1
UMBML400-BL	Flared Entry	400.0mm sq blank	1
UMBML500-12	Flared Entry	500.0mm sq - 12.0mm stud	1
UMBML500-16	Flared Entry	500.0mm sq - 16.0mm stud	1
UMBML500-BL	Flared Entry	500.0mm sq blank	1
UMBML630-12	Flared Entry	630.0mm sq - 12.0mm stud	1
UMBML630-16	Flared Entry	630.0mm sq - 16.0mm stud	1
UMBML630-BL	Flared Entry	630.0mm sq blank	1



CIRCUIT BREAKER NARROW PALM CRIMP LUGS

PART NUMBER	SIZE	PACK QTY
UMCBL35-6	35.0mm sq - 6.0mm	1
UMCBL35-6	35.0mm sq - 8.0mm	1
UMCBL50-6	50.0mm sq - 6.0mm	1
UMCBL50-8	50.0mm sq - 8.0mm	1
UMCBL50-10	50.0mm sq - 10.0mm	1
UMCBL70-6	70.0mm sq - 6.0mm	1
UMCBL70-8	70.0mm sq - 8.0mm	1
UMCBL70-10	70.0mm sq - 10.0mm	1
UMCBL95-8	95.0mm sq - 8.0mm	1
UMCBL95-10	95.0mm sq - 10.0mm	1
UMCBL120-8	120.0mm sq - 8.0mm	1
UMCBL120-10	120.0mm sq - 10.0mm	1
UMCBL150-8	150.0mm sq - 8.0mm	1
UMCBL150-10	150.0mm sq - 10.0mm	1
UMCBL185-10	185.0mm sq - 10.0mm	1
UMCBL185-12	185.0mm sq - 12.0mm	1
UMCBL240-10	240.0mm sq - 10.0mm	1
UMCBL240-12	240.0mm sq - 12.0mm	1
UMCBL300-10	300.0mm sq - 10.0mm	1
UMCBL300-12	300.0mm sq - 12.0mm	1



LONG PALM & LONG BARREL NO HOLE COPPER CRIMP LUGS

PART NUMBER	SIZE	PACK QTY
UMLPNH16	16.0mm	1
UMLPNH25	25.0mm	1
UMLPNH35	35.0mm	1
UMLPNH50	50.0mm	1
UMLPNH70	70.0mm	1
UMLPNH95	95.0mm	1
UMLPNH120	120.0mm	1
UMLPNH150	150.0mm	1
UMLPNH185	185.0mm	1
UMLPNH240	240.0mm	1
UMLPNH300	300.0mm	1
UMLPNH400	400.0mm	1
UMLPNH500	500.0mm	1
UMLPNH630	630.0mm	1



BI METAL CRIMP LUGS

Approvals

IEC 61238-1-2003, ASNZS 9325-1-1995 approved)

U.M.A Bi Metal Crimp Lugs are made from the highest quality Aluminium (99.6%) and Copper (99.9%)
Operating Temp: -40°C to +100°C

PART NUMBER	SIZE	PACK QTY
UMBM1610	16.0mm sq - 10.0mm	1
UMBM2510	25.0mm sq - 10.0mm	1
UMBM2512	25.0mm sq - 12.0mm	1
UMBM3510	35.0mm sq - 10.0mm	1
UMBM3512	35.0mm sq - 12.0mm	1
UMBM5010	50.0mm sq - 10.0mm	1
UMBM5012	50.0mm sq - 12.0mm	1
UMBM7010	70.0mm sq - 10.0mm	1
UMBM7012	70.0mm sq - 12.0mm	1
UMBM9510	95.0mm sq - 10.0mm	1
UMBM9512	95.0mm sq - 12.0mm	1
UMBM12010	120.0mm sq - 10.0mm	1
UMBM12012	120.0mm sq - 12.0mm	1
UMBM15010	150.0mm sq - 10.0mm	1
UMBM15012	150.0mm sq - 12.0mm	1
UMBM18510	185.0mm sq - 10.0mm	1
UMBM18512	185.0mm sq - 12.0mm	1
UMBM24010	240.0mm sq - 10.0mm	1
UMBM24012	240.0mm sq - 12.0mm	1
UMBM30010	300.0mm sq - 10.0mm	1
UMBM30012	300.0mm sq - 12.0mm	1
UMBM300BL	300.0mm sq blank	1
UMBM40010	400.0mm sq - 10.0mm	1
UMBM40012	400.0mm sq - 12.0mm	1
UMBM400BL	400.0mm sq blank	1
UMBM50010	500.0mm sq - 10.0mm	1
UMBM50012	500.0mm sq - 12.0mm	1
UMBM500BL	500.0mm sq blank	1
UMBM63010	630.0mm sq - 10.0mm	1
UMBM63012	630.0mm sq - 12.0mm	1
UMBM630BL	630.0mm sq blank	1



COPPER LINKS

PART NUMBER	SIZE	PACK QTY
UMTL1.5	1.5mm	1
UMTL2.5	2.5mm	1
UMTL4	4.0mm	1
UMTL6	6.0mm	1
UMTL10	10.0mm	1
UMTL16	16.0mm	1
UMTL25	25.0mm	1
UMTL35	35.0mm	1
UMTL50	50.0mm	1
UMTL70	70.0mm	1
UMTL95	95.0mm	1
UMTL120	120.0mm	1
UMTL150	150.0mm	1
UMTL185	185.0mm	1
UMTL240	240.0mm	1
UMTL300	300.0mm	1
UMTL400	400.0mm	1
UMTL500	500.0mm	1
UMTL630	630.0mm	1



BRASS LINE TAPS

PART NUMBER	SIZE	PACK QTY
UMSB16	16.0mm	1
UMSB35	35.0mm	1
UMSB70	70.0mm	1
UMSB95	95.0mm	1
UMSB185	185.0mm	1



SCREW CONNECTORS

U.M.A Screw Connectors are easy to use and offer the best possible protection. New multi purpose AS3000 compliant single screw connector offers easy termination of both Power & Earth cable.

PART NUMBER	TYPE	SIZE	PACK QTY
UMBP1	Single Screw Connector 32amp	2 x 6.0mm	100
UMBP2	Double Screw Connector 32amp	3 x 6.0mm	50
UMSC1-40	Single Screw Connector 40amp	2 + 3 x 6.0mm	50
UMBP216	Double Screw Connector 10mm ²	2 x 16.0mm	1
UMBP235	Double Screw Connector 16mm ²	2 x 35.0mm	1



BP1



BP2



BP216



BP235



ENVIRONMENTALLY FRIENDLY PACKAGING

We believe that protecting the environment is everyone's responsibility. That's why we are proud to offer a range of environmentally friendly and biodegradable packaging options for a selection of our electrical products. We know that traditional plastic packaging can be harmful to the environment, and we want to do our part to reduce our carbon footprint.

Our 100% biodegradable cardboard and plastic packaging, is just as effective at protecting your products during shipping and storage, but without the negative environmental impact. By choosing our products, you can feel good knowing that you're making a positive choice for the planet.

(02) 8107 5770

sales@UMaustralia.com.au

BIODEGRADABLE
BAG



TAPES & PULL ROPES

UNDERGROUND WARNING TAPES	48
DETECABLE UNDERGROUND WARNING TAPE	48
HARD UNDERGROUND CABLE COVER	49
TEMPORARY CONSTRUCTION TAPE	49
PULL LINE ROPE	49
TELSTRA ROPE	49

CAUTION - ELECTRIC LINE BURIED BELOW

UNDERGROUND WARNING TAPES

Approvals

SGS, ASNZS2648.1.1995, ASNZS4275.1 19952649, ASTM D882, AS/NZS 4275.2:1995, ISO9001, ISO 105-A02:1993/Cor.2:2005

Essential for early visual warning for any buried pipes, conduits, cables or other integral service below. Underground warning tapes are made of ultra-strong, pure grade polyethylene with lead-free pigments to prevent discolouration. Available in 100um, 90um & 80um thickness. Multiple widths & lengths available.

PART NUMBER	TYPE	SIZE	COLOUR	PACK QTY
UMWT100O	Electrical	150.0mm x 100m	Orange	Roll
UMWT500O	Electrical	150.0mm x 500m	Orange	Roll
UMWT100W	Communications	150.0mm x 100m	White	Roll
UMWT500W	Communications	150.0mm x 500m	White	Roll



DETECTABLE UNDERGROUND WARNING TAPE

Approvals

ASNZS2648.1.1995, ASNZS4275.1 19952649, ASTM D882, ISO9001

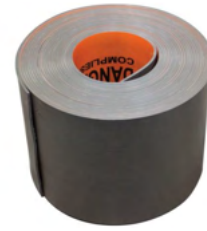
Essential for early visual warning for any buried pipes, conduits, cables or other integral service below. Underground warning tapes are made of ultra-strong, pure grade polyethylene with lead-free pigments to prevent discolouration. S/S Wire for detection. 316 or 304 grade 0.7mm, 0.5mm, 0.4mm or 0.3 available.

PART NUMBER	TYPE	SIZE	PACK QTY
UMWT250OD	Electrical Warning Tape	150.0mm x 250m	Roll
UMWT250WD	Communications Warning Tape	150.0mm x 250m	Roll



HARD UNDERGROUND CABLE COVER [AS/NZS4702-2000]

PART NUMBER	SIZE	PACK QTY
UMAHC150	150mm x 25m	25m
UMAHC200	200mm x 25m	25m
UMAHC300	300mm x 20m	20m



TEMPORARY CONSTRUCTION TAPE

Bright yellow colour with bold black print. Used to identify potential danger areas around construction wiring and potentially hazardous areas. Highly visible warning tape with clear warning message. Easily removable.

PART NUMBER	SIZE	PACK QTY
UMTEMP	37.0mm x 75m	6 rolls



PULL LINE ROPE

Approvals
SGS, ASNZS2648

Wide Throat Reel excellent for uncoiling without tangles. Made from abrasion resistant UV stabilised polypropylene. The braided construction adds superior strength over PE mono rope, while reducing stretch. App Break force of 90kg independently tested by SGS Laboratories. High abrasion resistance. Easily spliced. Low smoke halogen free.

PART NUMBER	SIZE	COLOUR	PACK QTY
UMPL1000	3.0mm x 1000m	Orange	1000m

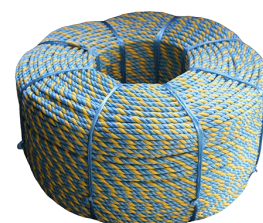


TELSTRA ROPE

Approvals
SGS

Blue and yellow three ply danline pulling rope for cables and conduits. Strong with stretch abrasion resistance. Wide throat roll excellent for uncoiling without tangles. The braided construction adds superior strength over PE mono rope, while reducing stretch. App Break Force 602 kg independently tested by SGS Laboratories.

PART NUMBER	SIZE	COLOUR	PACK QTY
UMBY4006	6.0mm x 400m	Blue/Yellow	400m



SITE PRODUCTS



CATENARY WIRE	52
THIMBLES	52
WIRE ROPE GRIPS	52
D SHACKLES	52
TURNBUCKLES	52
JACK CHAIN	53
EXTREME MAGNET	53
EARTH RODS	53
EARTH CLAMPS	53
FISH ROD	53
ROOF & GUTTER SILICONE	54
CABLE LUBE	54
DEKTITES	54
NYLON & METAL LOCK NUTS	54
SADDLES	55
SPRING/GIRDER CLIPS	55



CATENARY WIRE

PART NUMBER	SIZE	PACK QTY
UMCW180	7/0.90 x 180m	180m
UMCW100	7/1.25 x 100m	100m



THIMBLES

PART NUMBER	SIZE	PACK QTY
UMT610	6.0mm	10
UMT810	8.0mm	10



WIRE ROPE GRIPS

PART NUMBER	SIZE	PACK QTY
UMW610	6.0mm	10
UMW810	8.0mm	10



D SHACKLES

PART NUMBER	SIZE	PACK QTY
UMD610	6.0mm	10
UMD810	8.0mm	10



TURNBUCKLES

PART NUMBER	SIZE	PACK QTY
UMTB610	6.0mm	10
UMTB810	8.0mm	10



JACK CHAIN

PART NUMBER	SIZE	PACK QTY
UMJC25M	2.5mm	25m



EXTREME MAGNET

PART NUMBER	TYPE	PACK QTY
UMEXMAG	High powered magnet	1



EARTH RODS

PART NUMBER	TYPE	SIZE	PACK QTY
UMERD	Earth Rod with Tag & Clip	13.0mm x 1440mm	10
UMERDL	Earth Rod with Tag & Clip	13.0mm x 1800mm	10
UMERD19L	Earth Rod	19.0mm x 1650mm	1



EARTH CLAMPS

U.M.A Earth Clamps are manufactured from Copper Alloy with a Gunmetal Plate
Strong resistance against corrosion

PART NUMBER	TYPE	SIZE	PACK QTY
UMERC16	Earth U BOLT Rod to Cable Clamp	16.0mm	1
UMERC19	Earth U BOLT Rod Clamp	19.0mm	1
UMERTAG	Tag	N/A	10
UMERC13	13.0mm Earth Clip	13.0mm	10



UMERTAG



UMERC13



UMERC16



UMERC19

FISH ROD

PART NUMBER	TYPE	SIZE	PACK QTY
PT30	Fibreglass Twist Fish Rod with Holder	6.0mm x 30m	1



ROOF & GUTTER SILICONE

PART NUMBER	SIZE	COLOUR	PACK QTY	PRICING UNIT
UMRGS	300ml	Clear	24	Tube



CABLE LUBE

PART NUMBER	SIZE	PACK QTY	PRICING UNIT
UMCLS	1L	1	Tube



DEKTITES

PART NUMBER	TYPE	BASE SIZE	SIZE	PACK QTY
UMRF35	Roof Flashing EPDM & Aluminium Flashing	100mm x 100mm	0mm - 35.0mm	1
UMRF35L	Roof Flashing EPDM + Lead Zinc Sheet + Butyl	450mm x 280mm	0mm - 35.0mm	1



D35



DA35L

LOCK NUTS

SIZE	NYLON	METAL	PACK QTY
12.0mm	UMLN12N	UMLN12M	1
16.0mm	UMLN16N	UMLN16M	1
20.0mm	UMLN20N	UMLN20M	1
25.0mm	UMLN25N	UMLN25M	1
32.0mm	UMLN32N	UMLN32M	1
40.0mm	UMLN40N	UMLN40M	1
50.0mm	UMLN50N	UMLN50M	1
63.0mm	UMLN63N	UMLN63M	1
75.0mm	N/A	UMLN75M	1
90.0mm	N/A	UMLN90M	1
100.0mm	N/A	UMLN100M	1
115.0mm	N/A	UMLN115M	1
130.0mm	N/A	UMLN130M	1



SADDLES

U.M.A Saddles are made only from strong steel. Offering the perfect solution for all your cable and conduit management needs.

Offering 6.5mm fixing holes on each size for extra strength.

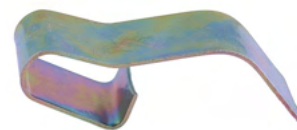


TYPE	SIZE	HALF	FULL	PACK QTY
ZINC SADDLES	12.0mm	UMHZ12	UMFZ12	100
	16.0mm	UMHZ16	UMFZ16	100
	20.0mm	UMHZ20	UMFZ20	100
	25.0mm	UMHZ25	UMFZ25	50
	32.0mm	UMHZ32	UMFZ32	50
	40.0mm	UMHZ40	UMFZ40	25
	50.0mm	UMHZ50	UMFZ50	20
HOT DIPPED GAL SADDLES	12.0mm	UMHHD12	UMFHD12	100
	16.0mm	UMHHD16	UMFHD16	100
	20.0mm	UMHHD20	UMFHD20	100
	25.0mm	UMHHD25	UMFHD25	50
	32.0mm	UMHHD32	UMFHD32	50
	40.0mm	UMHHD40	UMFHD40	25
	50.0mm	UMHHD50	UMFHD50	20
316 GRADE STAINLESS STEEL SADDLES	12.0mm	UMHSS12	UMFSS12	100
	16.0mm	UMHSS16	UMFSS16	100
	20.0mm	UMHSS20	UMFSS20	100
	25.0mm	UMHSS25	UMFSS25	50
	32.0mm	UMHSS32	UMFSS32	50
	40.0mm	UMHSS40	UMFSS40	25
	50.0mm	UMHSS50	UMFSS50	20

SPRING/GIRDER CLIPS

Girder clips are perfect for connecting cables, wires, and conduits to steel beams & profiles with no extra tooling required. Ideal when drilling is impossible or undesirable. Made from Spring Steel. High Impact resistant.

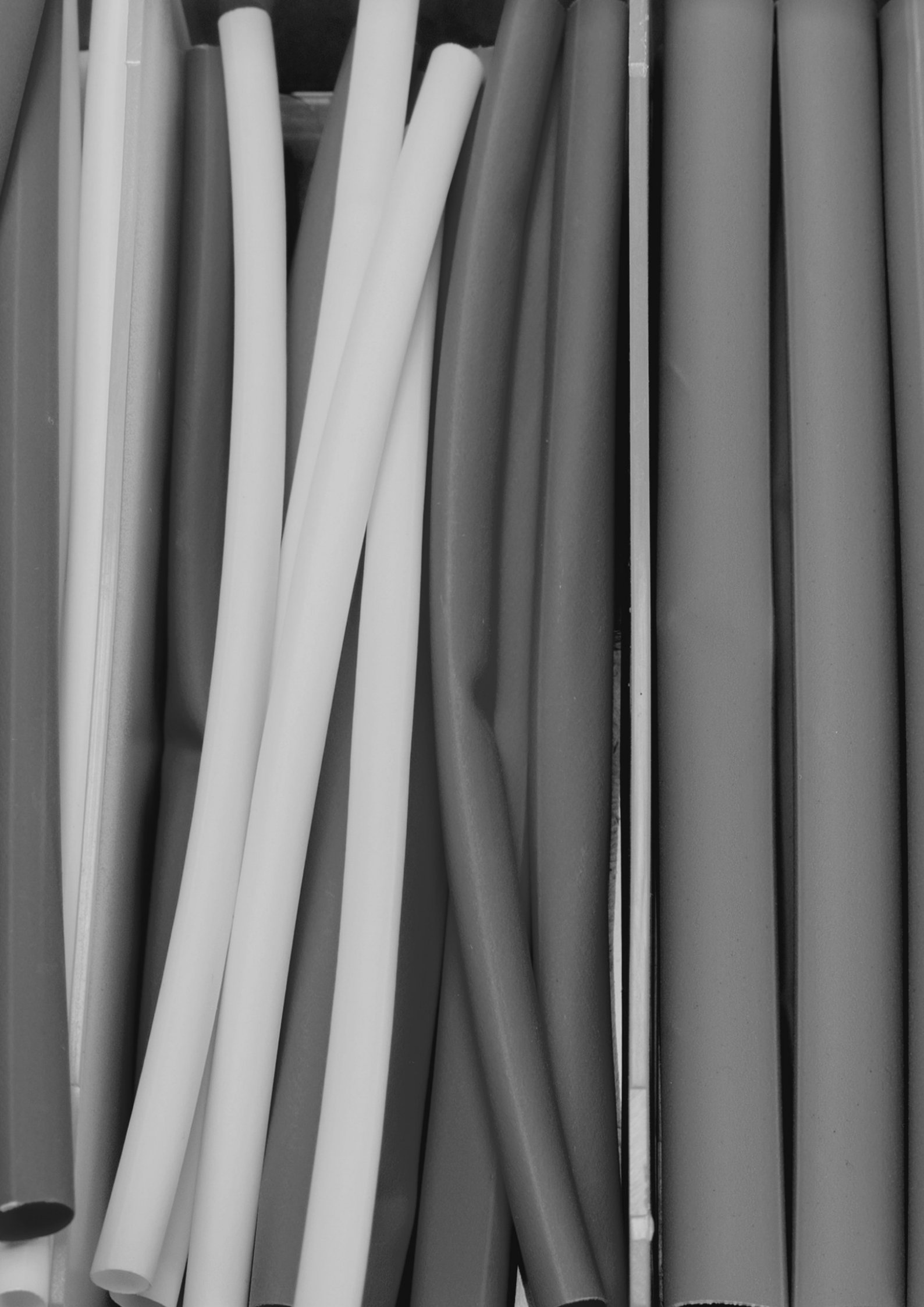
PART NUMBER	SIZE	PACK QTY
UMGC813	8.0mm - 13.0mm	100
UMGC1620	16.0mm - 20.0mm	100
UMGC2532	25.0mm - 32.0mm	100



HEATSHRINK



THIN WALL TUBING LENGTHS	58
THIN WALL TUBING ROLLS	58
GLUE LINED THIN WALL TUBING	59
GLUE LINED MEDIUM WALL TUBING	59
GLUE LINED BREAK OUT BOOTS	60
GLUE LINED END CAPS	60



THIN WALL TUBING

Approvals

UL, CSA, ROHS

Ordering

Add colour prefix on order. Example: UMHT1.5L or UMHT1.5R 'BK' for black

Thin Wall Lengths are 2:1 Shrink Ratio & flame retardant

Operating Temp: -55°C to +125°C

Environmentally friendly and low smoke

Colours: Black, Yellow, Blue, Green, Clear, White, Orange, Red, Yellow/Green

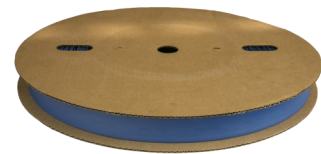
LENGTHS

PART NUMBER	SIZE	LENGTH
UMHT1.5LXX	1.5mm - 0.75mm	1.2m
UMHT2.5LXX	2.5mm - 1.25mm	1.2m
UMHT3LXX	3.0mm - 1.5mm	1.2m
UMHT5LXX	5.0mm - 2.5mm	1.2m
UMHT7LXX	7.0mm - 3.5mm	1.2m
UMHT10LXX	10.0mm - 5.0mm	1.2m
UMHT13LXX	13.0mm - 6.5mm	1.2m
UMHT20LXX	20.0mm - 10.0mm	1.2m
UMHT25LXX	25.0mm - 12.5mm	1.2m
UMHT40LXX	40.0mm - 20.0mm	1.2m
UMHT50LXX	50.0mm - 25.0mm	1.2m
UMHT80LXX	80.0mm - 40.0mm	1.2m
UMHT100LXX	100.0mm - 50.0mm	1.2m
UMHT120LXX	120.0mm - 60.0mm	1.2m



ROLLS

PART NUMBER	SIZE	LENGTH
UMHT1.5RXX	1.5mm - 0.75mm	200m
UMHT2.5RXX	2.5mm - 1.25mm	200m
UMHT3RXX	3.0mm - 1.5mm	200m
UMHT5RXX	5.0mm - 2.5mm	100m
UMHT7RXX	7.0mm - 3.5mm	100m
UMHT10RXX	10.0mm - 5.0mm	100m
UMHT13RXX	13.0mm - 6.5mm	100m
UMHT20RXX	20.0mm - 10.0mm	100m
UMHT25RXX	25.0mm - 12.5mm	50m
UMHT40RXX	40.0mm - 20.0mm	50m
UMHT50RXX	50.0mm - 25.0mm	25m
UMHT80RXX	80.0mm - 40.0mm	25m
UMHT100RXX	100.0mm - 50.0mm	25m
UMHT120RXX	120.0mm - 60.0mm	15m



GLUE LINED THIN WALL TUBING

Approvals

UL, CSA, ROHS

Glue Lined Thin Wall offers the highest level of waterproofing protection

3:1 Shrink Ratio, UV stabilised

Operating Temp: -55°C to +125°C

125°C degree flame retardant x linked

Flexible and quick to shrink

Environmentally friendly and low smoke

Colours: Black (Red on request)

PART NUMBER	SIZE	LENGTH
UMGUL3	3.2mm - 1.1mm	1.2m
UMGUL5	4.8mm - 1.6mm	1.2m
UMGUL7	6.4mm - 2.2mm	1.2m
UMGUL10	9.5mm - 3.2mm	1.2m
UMGUL13	12.7mm - 4.2mm	1.2m
UMGUL20	19.1mm - 6.4mm	1.2m
UMGUL25	25.4mm - 8.5mm	1.2m
UMGUL40	39.0mm - 13.0mm	1.2m
UMGUL50	50.0mm - 16.0mm	1.2m
UMGUL75	75.0mm - 25.0mm	1.2m
UMGUL100	100.0mm - 34.0mm	1.2m



GLUE LINED MEDIUM WALL TUBING

Approvals

ROHS

Glue Lined Medium Wall offers the highest level of waterproofing protection

3:1 Shrink Ratio

Operating Temp: -55°C to +125°C

125°C degree flame retardant x linked

Flexible and quick to shrink

Environmentally friendly and low smoke

Double Glue Lined

PART NUMBER	SIZE	PACK QTY
UMGUL12M	12.0mm - 4.0mm	1.2m/length
UMGUL22M	22.0mm - 7.0mm	1.2m/length
UMGUL27M	27.0mm - 9.0mm	1.2m/length
UMGUL34M	34.0mm - 10.0mm	1.2m/length
UMGUL40M	40.0mm - 12.0mm	1.2m/length
UMGUL56M	56.0mm - 18.0mm	1.2m/length
UMGUL92M	92.0mm - 27.0mm	1.2m/length
UMGUL120M	120.0mm - 36.0mm	1.2m/length
UMGUL140M	140.0mm - 47.0mm	1.2m/length



GLUE LINED BREAKOUT BOOTS

Approvals

UL, CSA, ROHS

Breakout Boots are Glue Lined and are quick and easy to use
 Water tight and highly resistant to ultraviolet rays and various chemicals
 Adhesive lined, UV stabilised
 3:1 shrink ratio
 Temp -40°C to +100°C

PART NUMBER	TYPE	SIZE/BODY	FINGERS	PACK QTY
UMB2/1	2 Way	32.0mm - 8.0mm	14.0mm - 3.0mm	1
UMB2/3	2 Way	60.0mm - 20.0mm	24.0mm - 7.0mm	1
UMB3/1	3 Way	30.0mm - 9.0mm	12.0mm - 3.0mm	1
UMB320	3 Way	37.0mm - 14.0mm	15.0mm - 4.0mm	1
UMB330	3 Way	70.0mm - 20.0mm	27.0mm - 8.0mm	1
UMB335	3 Way	80.0mm - 30.0mm	36.0mm - 13.0mm	1
UMB340	3 Way	110.0mm - 45.0mm	55.0mm - 20.0mm	1
UMB410	4 Way	35.0mm - 12.0mm	10.0mm - 3.0mm	1
UMB420	4 Way	40.0mm - 12.0mm	14.0mm - 3.0mm	1
UMB430	4 Way	58.0mm - 26.0mm	21.0mm - 7.0mm	1
UMB440	4 Way	80.0mm - 31.0mm	31.0mm - 10.0mm	1
UMB450	4 Way	90.0mm - 44.0mm	35.0mm - 13.0mm	1
UMB460	4 Way	125.0mm - 44.0mm	40.0mm - 14.0mm	1



GLUE LINED END CAP

Approvals

UL, CSA, ROHS

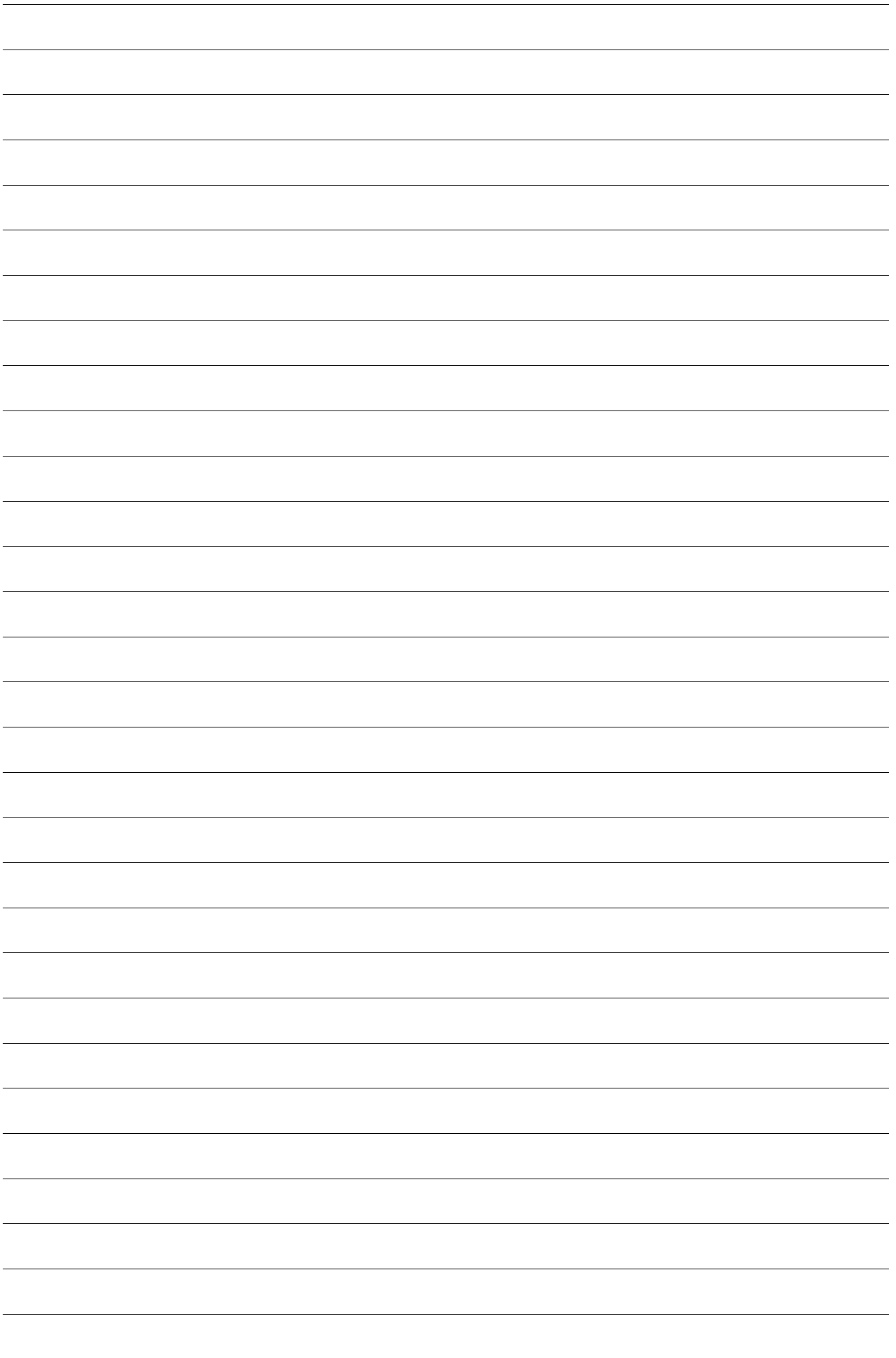
End Caps are Glue Lined and offer a reliable seal to cable ends
 Water tight and highly resistant to ultraviolet rays and various chemicals
 Adhesive lined, UV stabilised
 3:1 shrink ratio
 Temp -40°C to +100°C

PART NUMBER	SIZE	PACK QTY
UMGLC0	6.0mm - 2.0mm	1
UMGLC1	12.0mm - 4.0mm	1
UMGLC2	20.0mm - 7.0mm	1
UMGLC3	40.0mm - 14.0mm	1
UMGLC4	55.0mm - 18.0mm	1
UMGLC5	100.0mm - 34.0mm	1
UMGLC6	120.0mm - 40.0mm	1
UMGLC7	154.0mm - 52.0mm	1



NOTES

88



(02) 8107 5770
sales@UMaustralia.com.au
www.UMaustralia.com.au

U.M.A